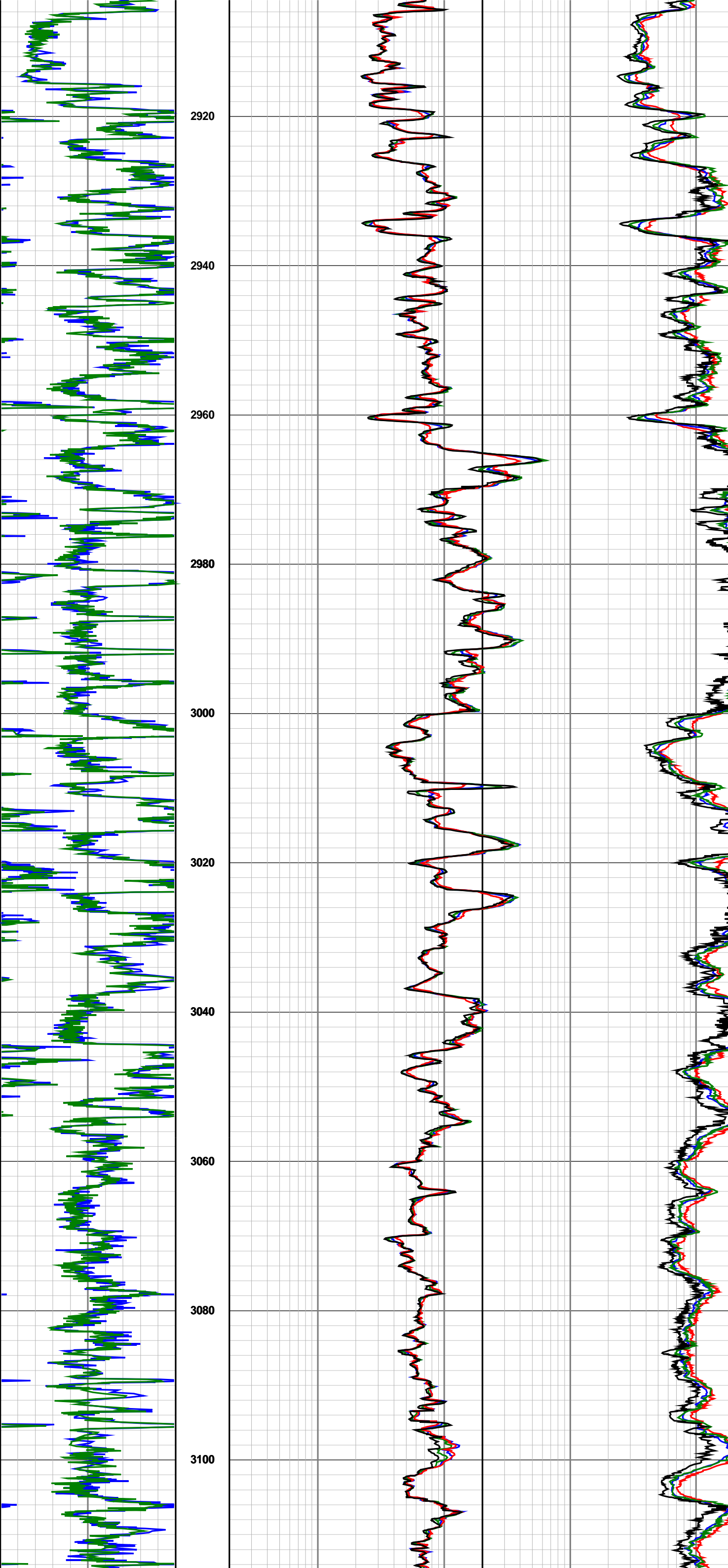


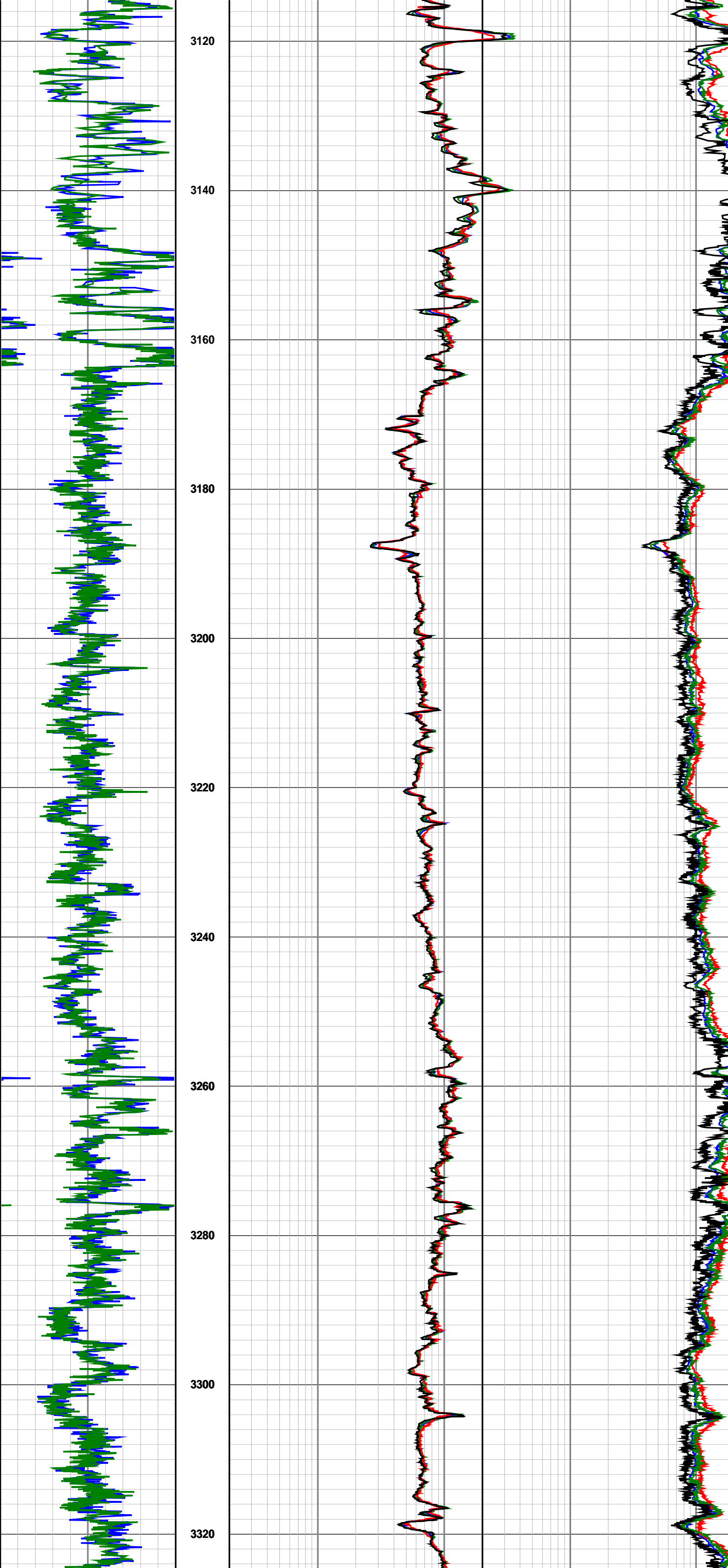
## QC 2

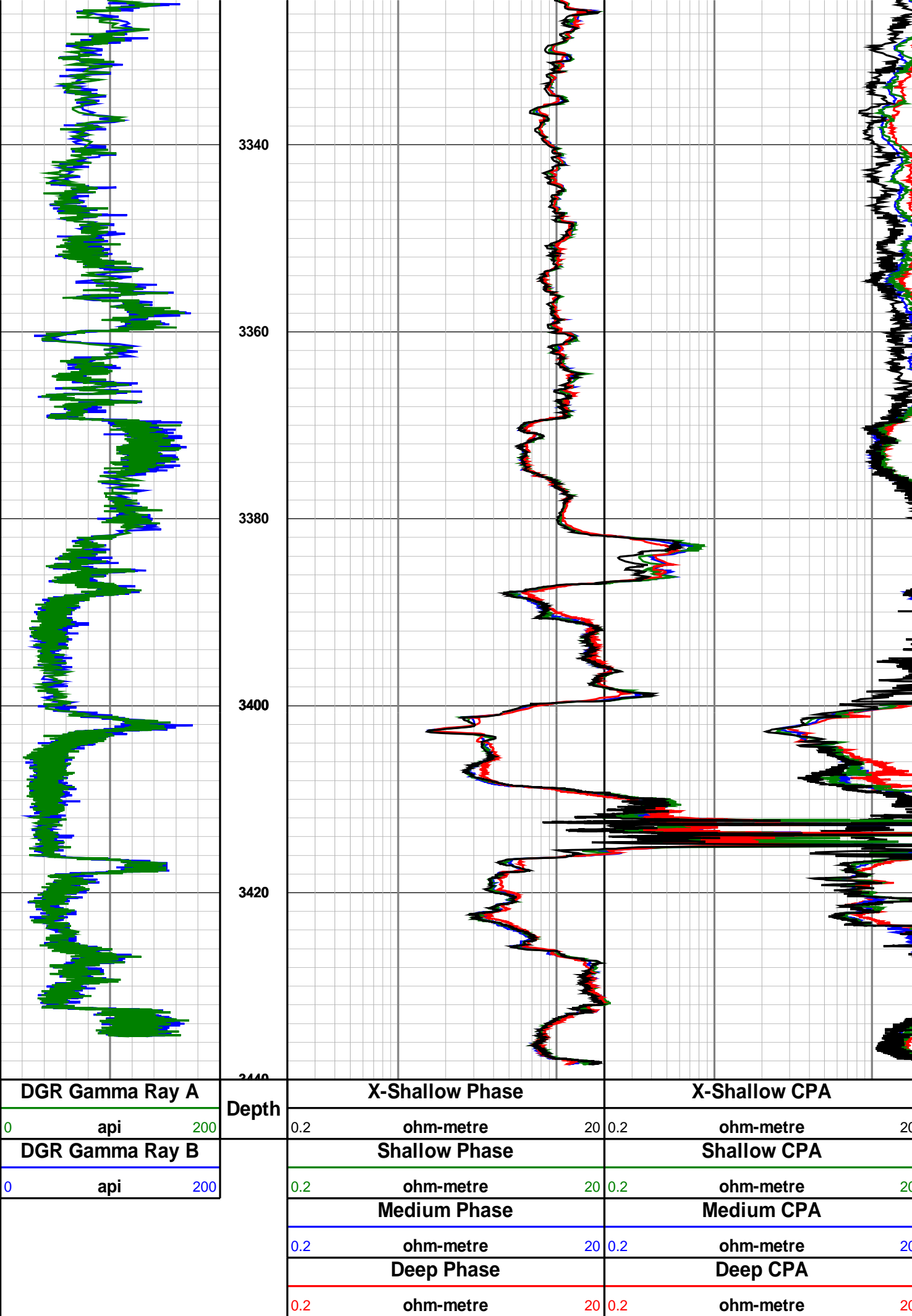
The figure displays three stacked time-series plots, likely representing different data series or models, plotted against a common x-axis ranging from 2740 to 2900. The y-axis for all plots is unlabeled but represents a numerical value.

- Top Plot (Black Line):** Shows a highly volatile, noisy signal. It features a prominent peak around x=2840, reaching a value of approximately 1.2. The signal fluctuates significantly throughout the range.
- Middle Plot (Red Line):** Shows a smoother signal, possibly a fitted model or a filtered version of the data. It follows the general trend of the top plot, with a clear peak around x=2840 reaching a value of approximately 0.8. The noise is significantly reduced.
- Bottom Plot (Blue Line):** Shows another noisy signal, similar to the top plot but with different characteristics. It also exhibits a peak around x=2840, reaching a value of approximately 0.6. The fluctuations are more frequent and sharper than in the top plot.

The x-axis is marked with major ticks at 2740, 2760, 2780, 2800, 2820, 2840, 2860, 2880, and 2900. The y-axis has a grid line at 0.0, with the top plot's values extending up to approximately 1.2, the middle plot's up to 0.8, and the bottom plot's up to 0.6.







DGR Gamma Ray A		
0	api	200
DGR Gamma Ray B		
0	api	200

Depth	X-Shallow Phase		X-Shallow CPA	
	0.2	ohm-metre 20	0.2	ohm-metre 20
	Shallow Phase		Shallow CPA	
	0.2	ohm-metre 20	0.2	ohm-metre 20
	Medium Phase		Medium CPA	
	0.2	ohm-metre 20	0.2	ohm-metre 20
	Deep Phase		Deep CPA	
	0.2	ohm-metre 20	0.2	ohm-metre 20